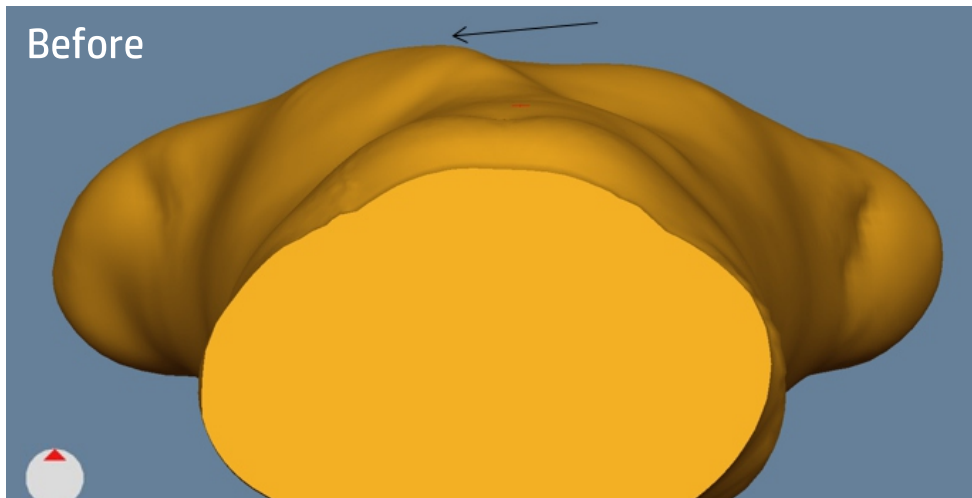
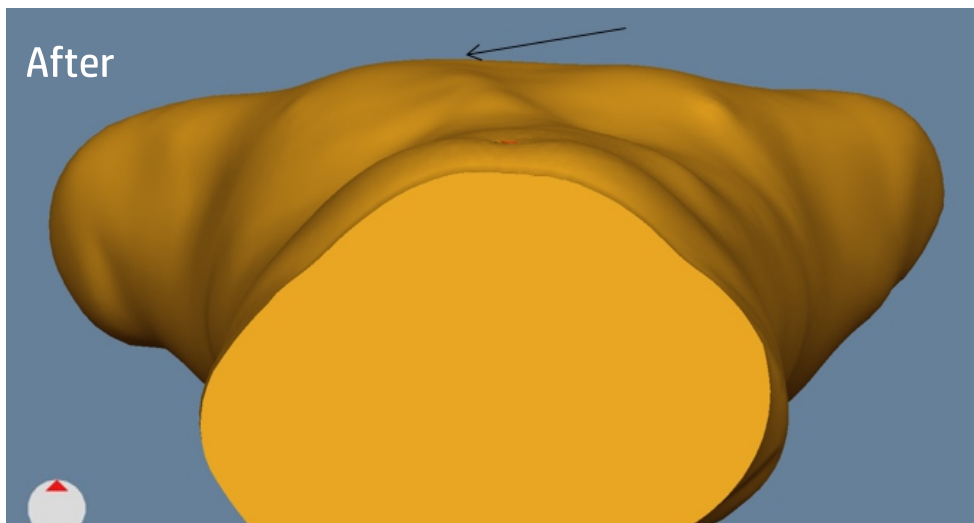




The following comparisons are oriented as if the patient is on their back and we are viewing the deformity from the belly button to their head. The arrow indicates the location of the Pectus Carinatum.



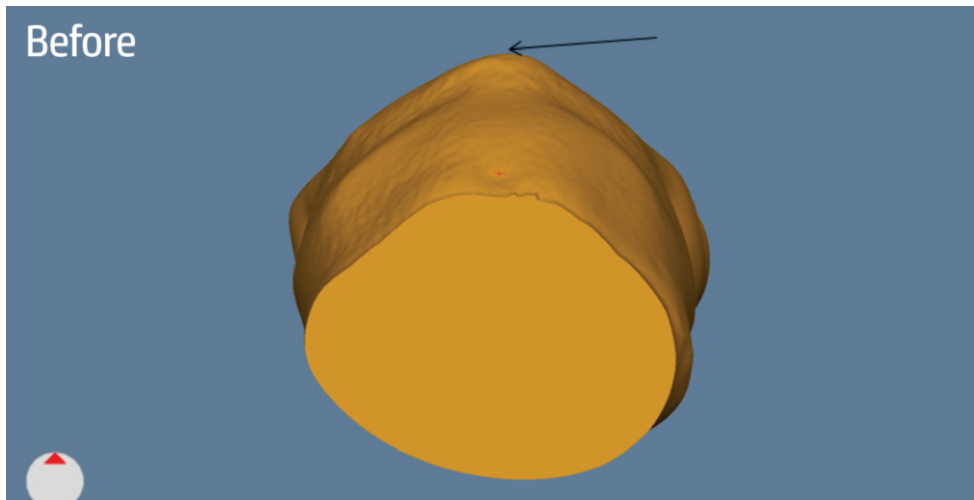
K.M. is an 18 year old male with a severe Pectus Carinatum deformity. He was prescribed a P4COsa and has worn it 18 hours a day for 2 months.



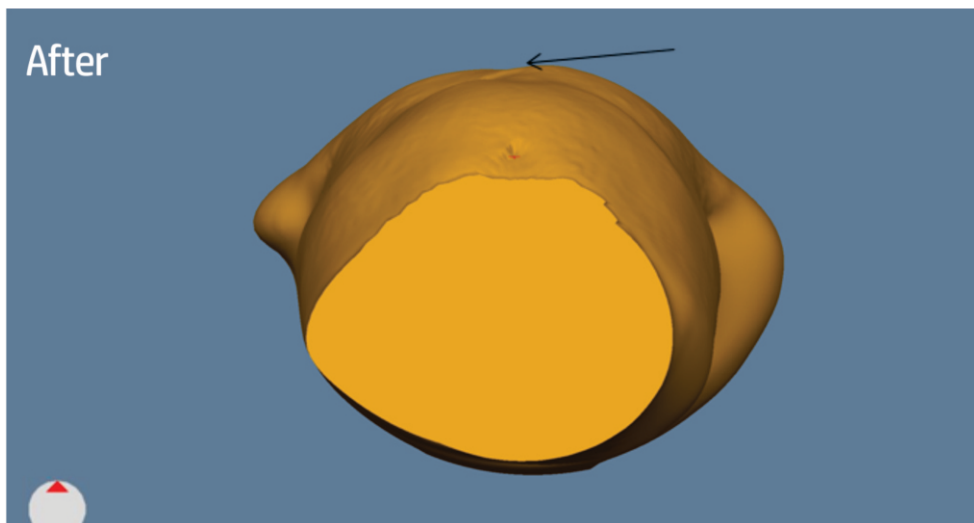
At the 2 month follow-up, a scan was done. The deformity has almost completely resolved.



The following comparisons are oriented as if the patient is on their back and we are viewing the deformity from the belly button to their head. The arrow indicates the location of the Pectus Carinatum.



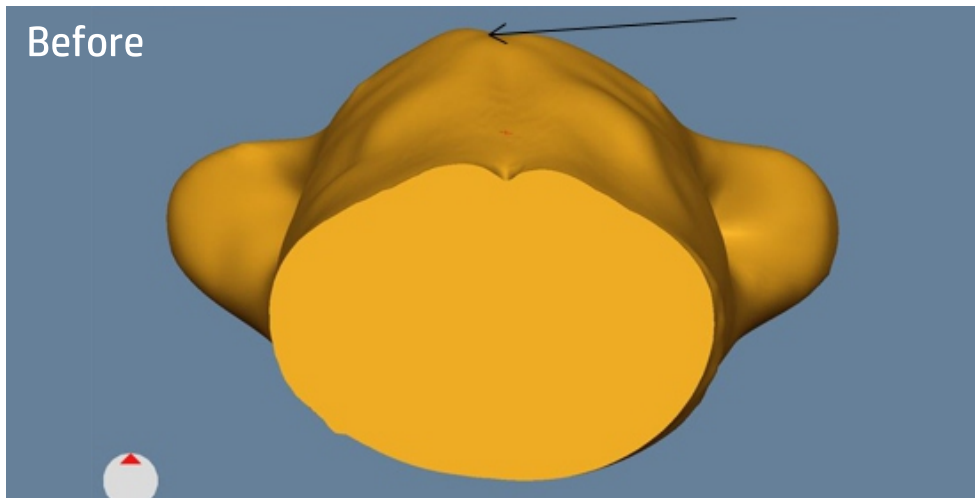
The top scan is A.C., a 2 year old boy with a severe Pectus Carinatum. He was prescribed a P4COft and wore it for 18 hours per day for 2 months.



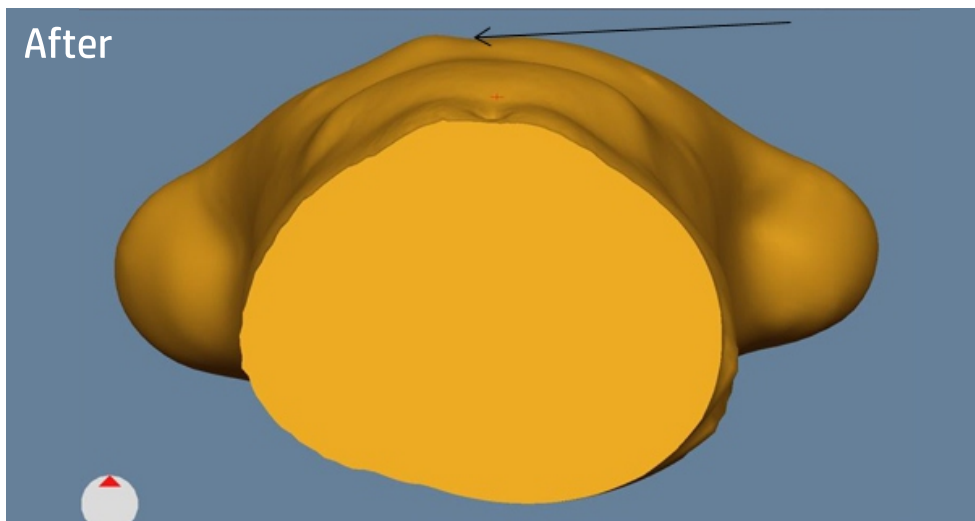
At the 2 month visit a second scan was done to visualize the change. There is complete resolution.



The following comparisons are oriented as if the patient is on their back and we are viewing the deformity from the belly button to their head. The arrow indicates the location of the Pectus Carinatum.



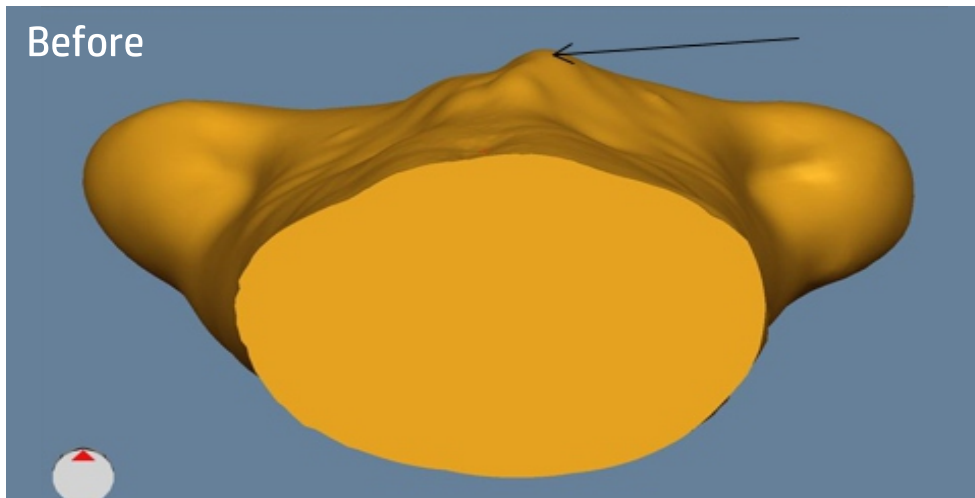
JB is a 13yo male with severe Pectus Carinatum (PC). He was prescribed a P4C0sa and wore it for 18 hours per day for 11 months.



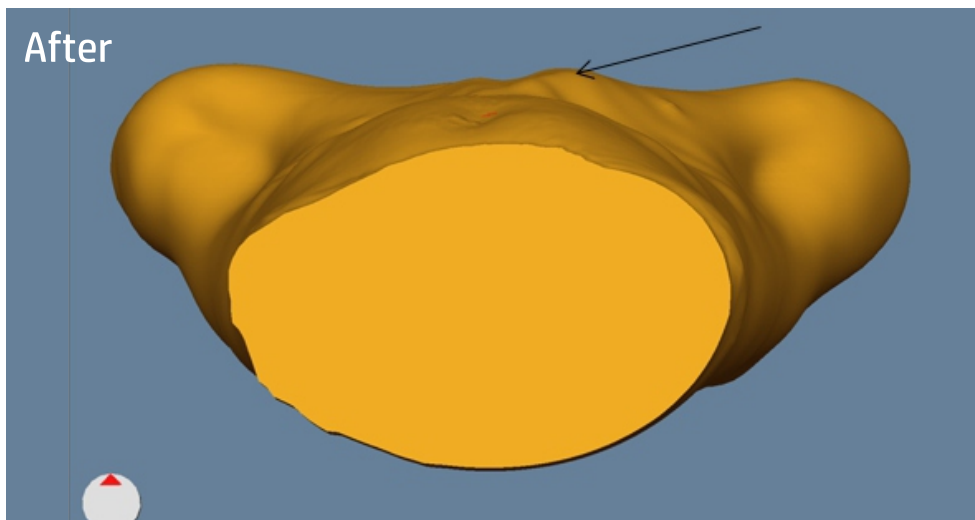
At his 11mo follow-up a second scan was done to visualize the change. There is a complete correction of his chest and a significant reduction in his PC.



The following comparisons are oriented as if the patient is on their back and we are viewing the deformity from the belly button to their head. The arrow indicates the location of the Pectus Carinatum.



CC is a 15yo male with severe Pectus Carinatum (PC). He was prescribed a P4COsa and wore it for 18 hours per day for 17 weeks.



At his 17 week follow-up a second scan was done to visualize the change. There is a remarkable correction of his chest and a significant reduction in his PC.